

# Alarm, communication and qualification with aircraft accident



# 'Players' in Alarm and qualification



Qualification  
Accident



Schiphol Airport



Emergency  
Control  
Rooms



Emergency  
Services

Safety Region

# 'Players' in Alarm and qualification



Schiphol Airport



**Emergency Control Rooms**

**Emergency Services**

Safety Region

# Alarming

## Way of Communication

### Various reporters

### Emergency rooms

### Response teams

#### People

Werknemers Schiphol- portofoon/ mobielefoon

Burgers/ werknemers Schiphol en daarbuiten- vaste en mobiele telefoon

#### Coördinatiecentra Publiek

Front Office Beheer en Uitvoering Provincie- Haarlem

### Various coordination centra public

#### Coördinatiecentra Privaat

Regiecentrum Openbaar Verkeer (ROV) Connexxio- Nieuwegein

'Back office' ProRail- OCCR Utrecht

Verkeersleiding ProRail Randstad Noord- Amsterdam

Operations Control Centre (OCC) (KLM)- Schiphol Oost

Amsterdam Airport Schiphol (A.A.S.)

Security Control Centre (SCC)- Schiphol- SHG

Bagage AfhandelingsSysteem Regie (BAS)- Schiphol- Bagagekelder

Apron Planning & Control (APC)- Schiphol- Koepel in Toren Centrum

Huwendienst- Schiphol- Gate C4

RegieCentrum (RC) A.A.S. Schiphol- Terminal (excl. AC-A.A.S.)

Particuliere alarm- of calamiteitcentrales



### Emergency rooms government



### Emergency room Airport



### Response teams government



### Response teams Schiphol

#### ATC

Centrum/ Satellite- rode telefoon

Centrum/ Satellite- rode telefoon

Schiphol Oost (ACC)- vaste telefoon

#### Transport

Chauffeurs/ werknemers/ burgers

Bemanning schip/ werknemers/ burgers

Machinist/ Treinpersoneel/ werknemers



Beeldmateriaal beveiliging

Brand- en handmelders gebouwen

Brand- en handmelders Schipholspoortunnel

Brand- en handmelders KLM- gebouwen

Deurstandsignalering of handmelder Abdijntunnel

4-erige automatische melders (particuliere systemen)

### Fire warning Airside Control Centre



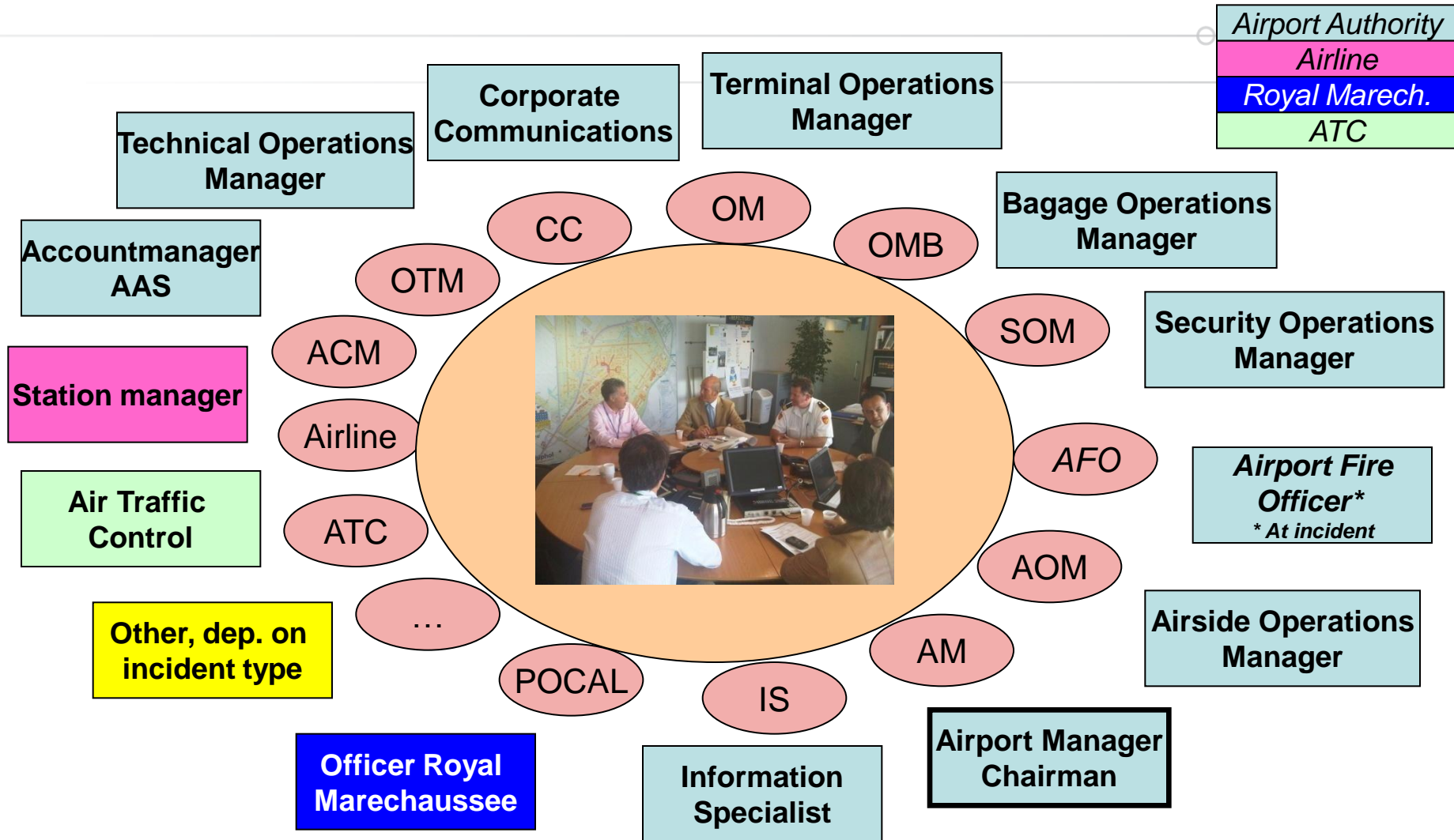
# Qualifications

## Qualification options aircraft- related incidents & accidents Schiphol

	No accident/ warning		Accident	
Qualification	Pre-alarm small	Pre-alarm large	Accident small	Accident large
Minimum level of command	Schiphol Team at Incident Site	Operational Team	Schiphol Team at Incident Site	Policy Team

‘Accident small’ with one or more dead victims means Policy Team in charge at minimum level

# Airport Crisis Team



# Structure of crisis organisation – Government and A.A.S.

Schiphol Structure  
Incl. Marechaussee liaisons

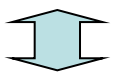
Governmental Structure  
Incl. Schiphol liaisons

Policy Team

**BT**

60 MIN

Airport Crisis Team  
(Commissie van Overleg)

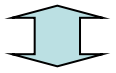


Operational Team

**OT**

**ACM**

**ACT** 60 MIN



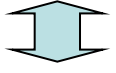
Command Post at Incident

**COPI**

**ACM**

**ACT** 30 MIN

Action Centre Mobility



Schiphol Team at Incident Site

**STPI**

**ACT** 15 MIN



**Incident**

# Relation Government- ACT- KLM

Upscaling  
Government

Upscaling  
A.A.S.

Upscaling  
KLM

